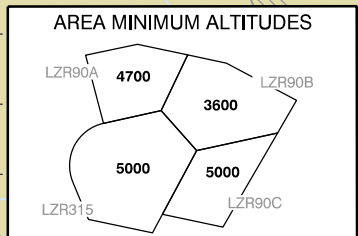
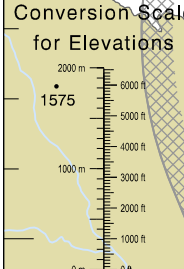
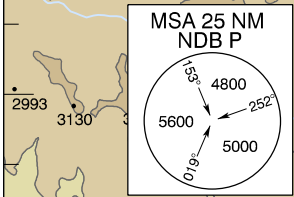
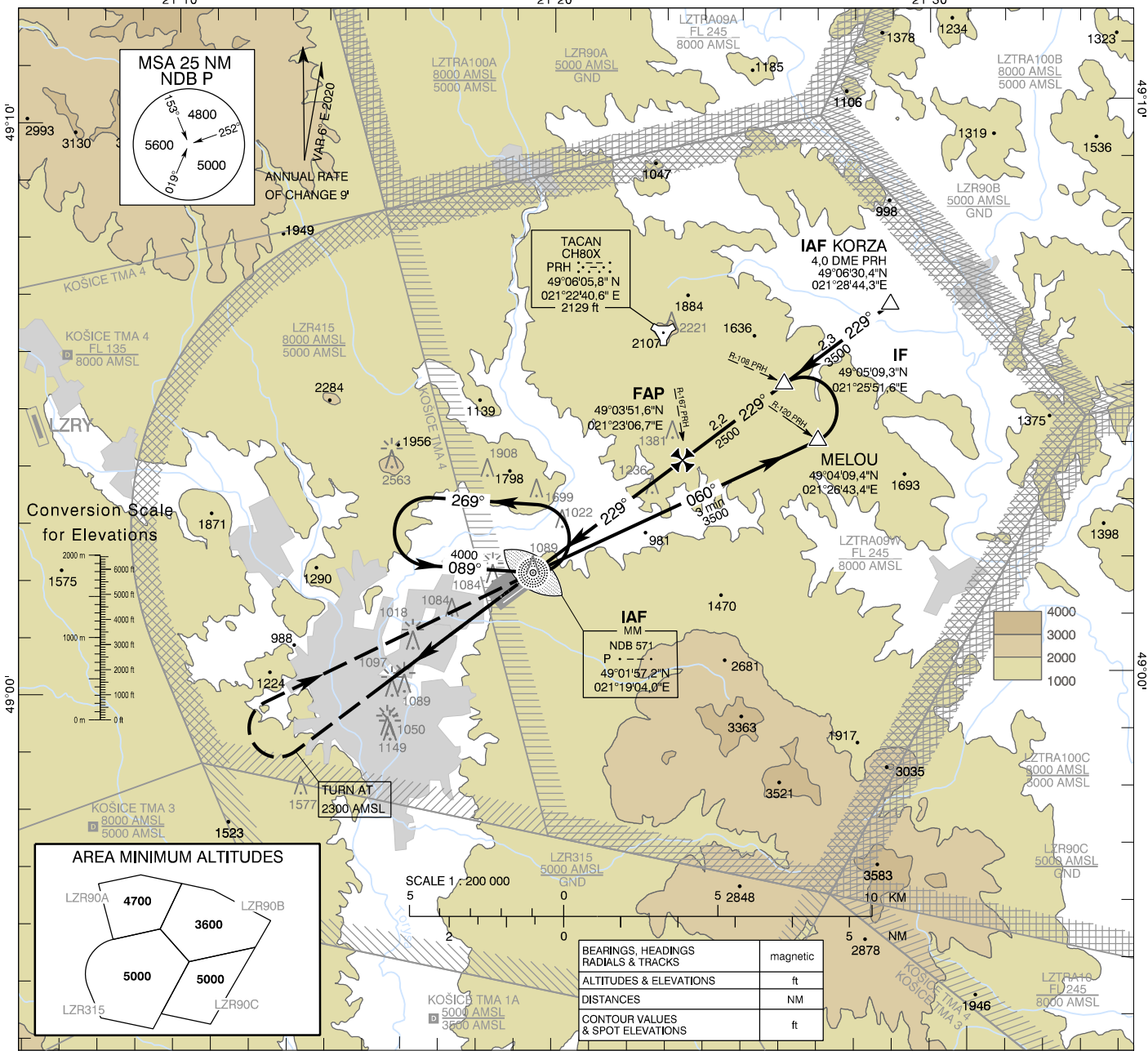


**INSTRUMENT
APPROACH
CHART - ICAO**

TRANSITION ALTITUDE
10 000 ft
AD ELEV 1032 - 38 hPa
THR RWY 23 ELEV 1035 - 37 hPa

PREŠOV VEŽA 135,500
PREŠOV PRECISION 397,050
PREŠOV RADAR 134,325

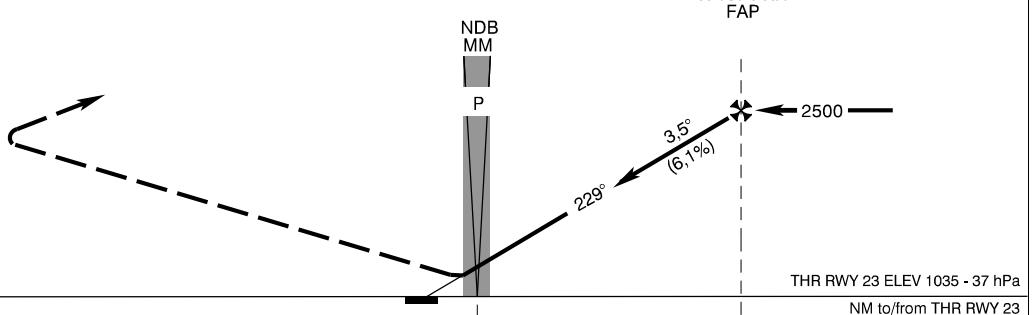
**PREŠOV
PAR RWY 23
ACFT CAT H**



| | |
|--|----------|
| BEARINGS, HEADINGS RADIALS & TRACKS | magnetic |
| ALTITUDES & ELEVATIONS | ft |
| DISTANCES | NM |
| CONTOUR VALUES & SPOT ELEVATIONS | ft |

MISSED APPROACH

Climb STRAIGHT AHEAD,
at 2300 AMSL turn right to NDB P,
climbing to 4000 AMSL and hold.
No turn before 6,2 DME PRH.



TCH 35

THR RWY 23 ELEV 1035 - 37 hPa
NM to/from THR RWY 23

| | |
|----------------------|---------------|
| OCA (OCH) | H |
| Straight-in Approach | ft 1235 (200) |

| | | | | | |
|------------------------|--------|-----|-----|-----|-----|
| Ground speed | kt | 70 | 90 | 100 | 110 |
| Rate of descent (6.1%) | ft/min | 434 | 557 | 619 | 681 |

Timing not authorized for defining the MAPt.

CHANGES: new chart