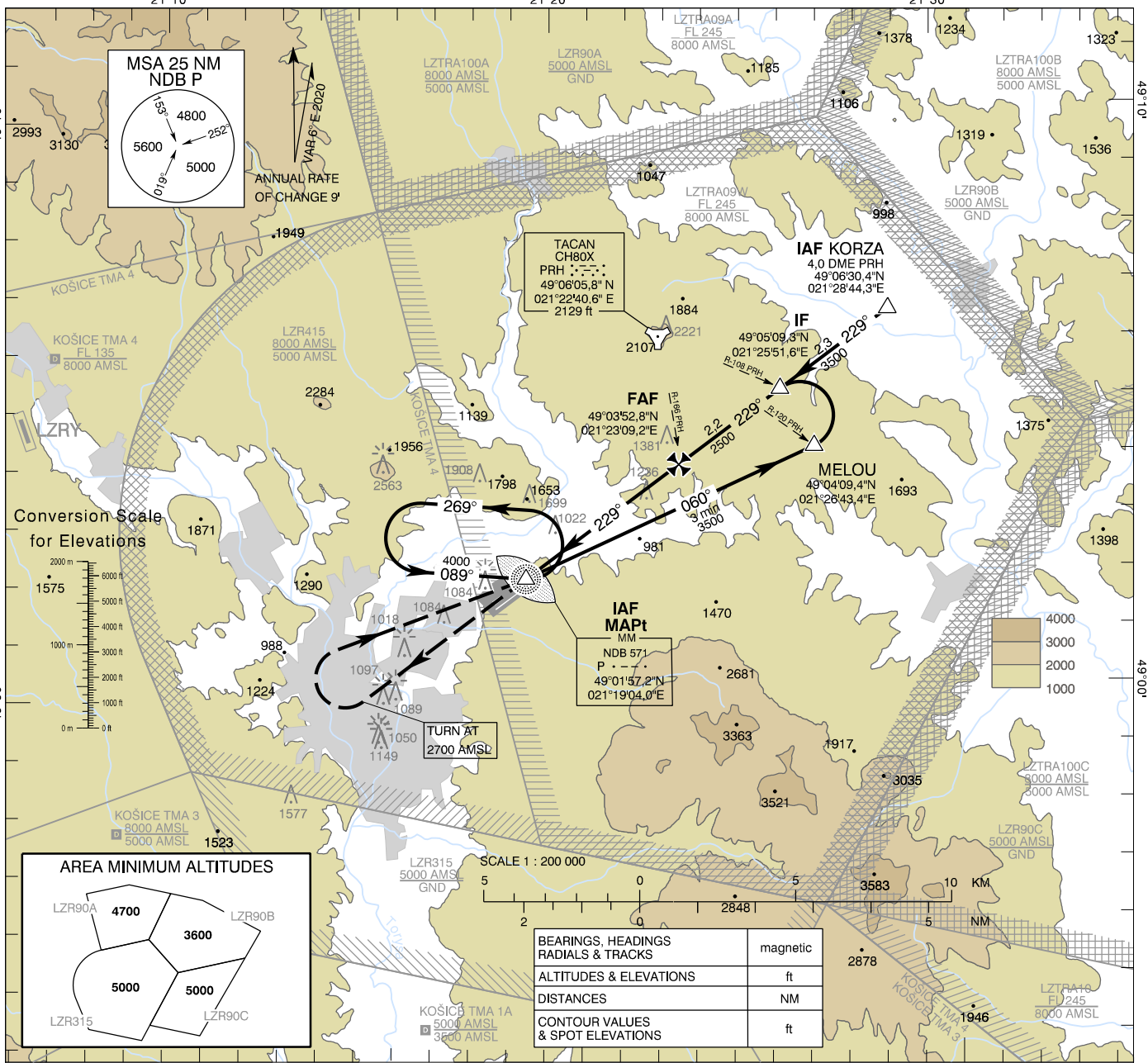


**INSTRUMENT  
APPROACH  
CHART - ICAO**

**TRANSITION ALTITUDE**  
10 000 ft  
AD ELEV 1032 - 38 hPa  
THR RWY 23 ELEV 1035 - 37 hPa

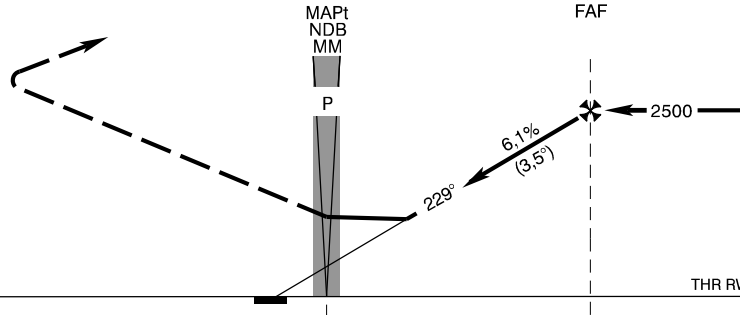
**PREŠOV VEŽA 135,500**  
**PREŠOV PRECISION 397,050**  
**PREŠOV RADAR 134,325**

**PREŠOV  
NDB RWY 23  
ACFT CAT H**



**MISSED APPROACH**

Climb STRAIGHT AHEAD, at 2700 AMSL  
turn right to NDB P,  
climbing to 4000 AMSL and hold.  
No turn before NDB P.



THR RWY 23 ELEV 1035 - 37 hPa  
NM to/from THR RWY 23

OCA (OCH)	H
Straight - in Approach	ft 1860 (828)

Ground speed	kt	70	90	100	110
FAF - MAPt (3,3 NM)	min:sec	2:50	2:12	1:59	1:48
Rate of descent (6,1%)	ft/min	434	557	619	681

Timing not authorized for defining the MAPt.

CHANGES: all airspace redesigned; procedure redesigned; MSA; MAG VAR; precision frequency; call sign; IAF KORZA added; FAF coordinates; IF coordinates; IAF NDB changed to MELOU